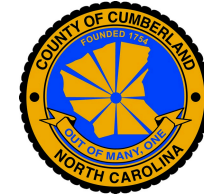


Figure 9  
**PUBLIC TRANSPORTATION ANALYSIS**



**FAMPO & CUMBERLAND COUNTY**

**CTP Analysis and Information**

Public Transportation Features

- Urban Fixed Bus Corridor —
- Regional Bus Corridor —
- Rural Fixed Bus Corridor —
- Transit Facility
- Park and Ride Lot
- Amtrak Station
- Intermodal Terminal

Public Transportation Analysis Features

- Airport
- Seaport
- Military Installation
- Destination
- Hospital
- School
- Study Road
- On-Demand Service Area
- FAMPO
- Mid-Carolina RPO



Full report at:  
[Tinyurl.com/FAMPOCTP](http://Tinyurl.com/FAMPOCTP)



Sheet 3 of 5

Base map date: November 07, 2019

**Legal Disclaimer**

This product contains mapping data for informational and planning purposes only, and is subject to change. Users should review or consult the primary data sources to ascertain the usability of the information.

Plan Date: April 21, 2021

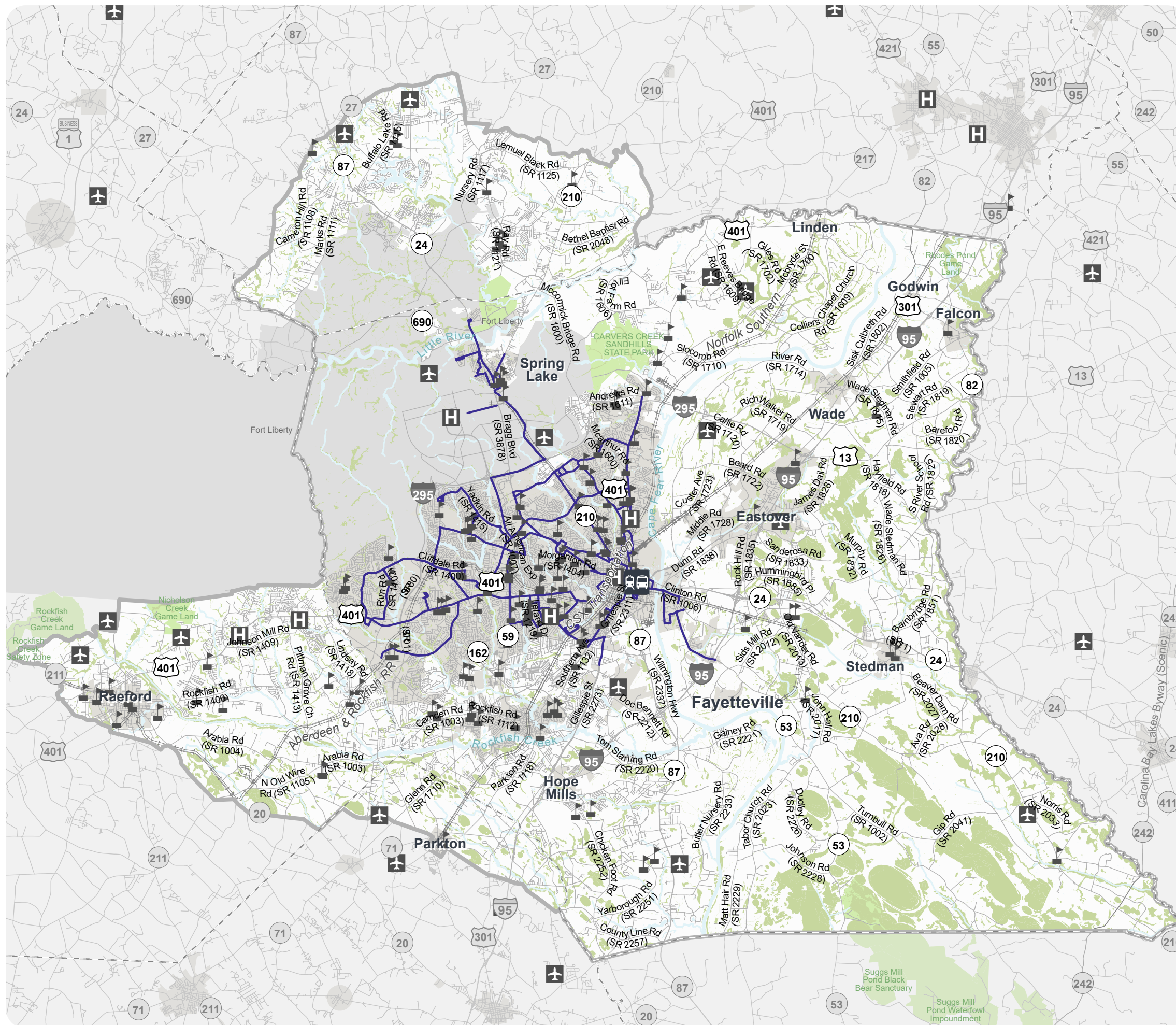
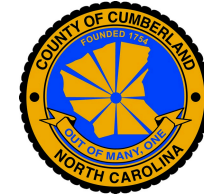




Figure 9  
**PUBLIC TRANSPORTATION  
 TDI ANALYSIS**



**FAMPO & CUMBERLAND COUNTY**

**CTP Analysis and Information**

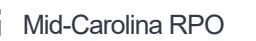
Public Transportation Features

- Urban Fixed Bus Corridor —
- Regional Bus Corridor —
- Rural Fixed Bus Corridor —
- Transit Facility
- Park and Ride Lot
- Amtrak Station
- Intermodal Terminal

Public Transportation Analysis Features

- Airport
- Seaport
- Military Installation
- Ferry Route
- Destination
- Hospital
- School
- Study Road

0 5 10 15 20+ Transit Dependency Index



Full report at:  
[Tinyurl.com/FAMPOCTP](https://tinyurl.com/FAMPOCTP)



Sheet 4 of 5

Base map date: November 07, 2019

**Legal Disclaimer**

This product contains mapping data for informational and planning purposes only, and is subject to change. Users should review or consult the primary data sources to ascertain the usability of the information.

Plan Date: April 21, 2021

